



# Tools for Angle Grinders

Product Catalog



# Angle Grinders

|                                   |    |
|-----------------------------------|----|
| Wheel Brushes .....               | 6  |
| Cup Brushes .....                 | 11 |
| Bevel Brushes .....               | 20 |
| Tools for Cordless Machines ..... | 24 |
| Coarse Cleaning Fleece .....      | 28 |
| Flap Discs for Grinding .....     | 29 |
| Flap Discs for Polishing .....    | 34 |
| Accessoires .....                 | 37 |

# Angle Grinders

## Technical and General Information

### Brushes for Angle Grinders. Important user information.

#### Determining the maximum working speed

The maximum working speed of a brush is dependent on its diameter. The wider the diameter of a brush, the lower the maximum working speed. The maximum working speed has a relevance to safety. It must never be exceeded. This information is on the brush itself. Additionally you will find below an aid for the most popular angle grinder sizes with their maximum speeds.

| Angle grinder size (mm) | 115 mm                   | 125mm                    | 150 mm                  | 180 mm                  | 230 mm                  |
|-------------------------|--------------------------|--------------------------|-------------------------|-------------------------|-------------------------|
| Angle grinder size (in) | 4 1/2"                   | 5"                       | 6"                      | 7"                      | 9"                      |
| Max. working speed      | 12,500 min <sup>-1</sup> | 12,500 min <sup>-1</sup> | 8,500 min <sup>-1</sup> | 8,500 min <sup>-1</sup> | 6,500 min <sup>-1</sup> |

#### Which brush is used on which angle grinder?



Not every brush can be fitted to every angle grinder. There are safety specifications for this too. To get the best out of your device and brush, please use the angle grinder sizes specified here for the respective brush (refer to the table).

Important: You must on no account use a smaller angle grinder size than specified here. For our retail packs, the suitable angle grinder size is generally on the packaging itself, with symbol.

| Brush       |          | Wire    | Brush diameter in mm |     |     |    |         |         |     |     |      |      |     |     |     |     |
|-------------|----------|---------|----------------------|-----|-----|----|---------|---------|-----|-----|------|------|-----|-----|-----|-----|
|             |          |         | 60                   | 65  | 75  | 80 | 90      | 100     | 115 | 120 | 125  | 130  | 140 | 150 | 178 | 230 |
| Wheel brush | Knotted  |         |                      |     |     |    | 115     | 115     |     | 125 |      |      |     | 150 | 180 | 230 |
|             | Crimped  |         |                      |     |     |    | 115     | 115     |     |     |      |      |     |     |     |     |
|             | Abrasive |         |                      |     |     |    |         |         |     |     | 150* | 150* |     |     |     |     |
| Bevel brush | Knotted  |         |                      |     |     |    | 115     | 115     |     | 125 |      |      |     |     |     |     |
|             | Crimped  |         |                      |     |     |    | 115     | 115     |     |     |      |      |     |     |     |     |
|             | Abrasive |         |                      |     |     |    | 115*    | 115/125 |     |     |      |      |     |     |     |     |
| Cup brush   | Knotted  |         | 115/125              | 125 | 150 |    | 180     |         | 230 |     |      |      |     |     |     |     |
|             | Crimped  | 115/125 |                      | 125 | 150 |    | 150/180 |         |     | 230 |      |      |     | 230 |     |     |
|             | Abrasive |         | 115/125              |     |     |    | 150*    |         |     |     |      |      |     |     |     |     |

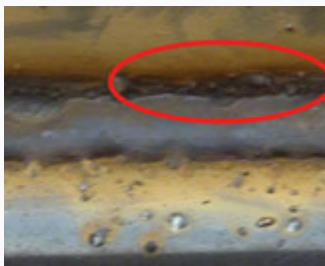
\*variable speed grinder or cordless

## Product Advice for Weld Seam Cleaning

MMA, TIG/MIG/MAG and plasma welding techniques leave different debris and inclusions on the surface of the weld seam. Slag, spatters, silicates and blue discolouring must be removed. If the welded part is not optimally cleaned, faults/defects in the coating and corrosion can occur in the area of the inclusions.

Osborn can offer you the right cleaning tool for every welding technique and type of seam treated (root and closure welds, fill layers). In the product range for this work, we have brushes as well as roughing, flap and polishing flap discs, coarse cleaning fleeces, and carbide cutters.

### MMA



#### Slag

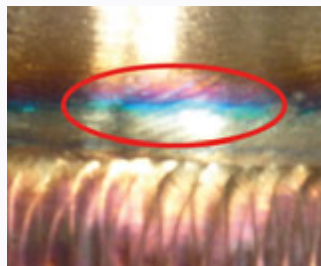
Residue formed when the electrodes wear. Use coarsely knotted wires with a diameter of 0.50 - 0.80 mm to remove slag.



#### Spatters

Abrasive discs are required to grind off these residues.

### TIG, MIG, MAG, Plasma



#### Blue discolouration

Oxide deposits, formed mainly when welding stainless steel. Crimped fine stainless steel wires with a diameter of 0.20 - 0.30 mm are ideal for removing blue discolouration.



#### Silicates

They form when silicone, present in most steel alloys, is burnt during the welding process and turn to silicone dioxide. Use a medium wire with a diameter of 0.35 - 0.50 mm to remove silicates.



#### Treatment of Weld Seams. When to use what.

Our practical welding matrix shows you the right tool for every application.

[www.osborn.com/en/service/catalogues](http://www.osborn.com/en/service/catalogues)



# Angle Grinders

## Wheel Brushes



Appearance can vary from picture depending on variant.



EUPBWB001 | SUPERIOR ★★★★★

## Wheel brushes, knotted wire

**Knotted wheel brush, industrial quality, for general use on all common angle grinders.**

- Aggressive and speedy cleaning; all wire tips are in use at the same time
- Long service life
- TÜV-Süd certified (safety tested, production monitored)
- Available in diverse specifications with arbor hole or thread M14

**Application:** For roughing, deburring and simple rust removal work.

Available in practical POS box packaging with Euro-standard hole for ideal presentation at the POS.



| Ø   | A  | T  | B    | G   | Adapt. | RPM max. | DU | PKG.    | Steel 0.35     | Steel 0.50     | Steel 0.80     |
|-----|----|----|------|-----|--------|----------|----|---------|----------------|----------------|----------------|
| 75  | 12 | 15 | 13   |     |        | 20000    | 12 |         | ● 0002-611 131 | ● 0002-611 151 |                |
| 100 | 12 | 20 | 22.2 |     | HP     | 12500    | 8  | POS Box | ● 0002-621 131 | ● 0002-621 151 |                |
| 115 | 6  | 19 | 22.2 |     |        | 12000    | 10 | POS Box | ● 9502-626 301 | ● 9502-626 501 |                |
| 115 | 12 | 12 | 22.2 |     | HP     | 12500    | 10 | POS Box | ● 0002-631 131 |                |                |
| 115 | 12 | 22 | 22.2 |     | HP     | 12500    | 10 | POS Box |                | ● 0002-631 151 |                |
| 115 | 12 | 23 |      | M14 |        | 12500    | 6  | POS Box | ● 0402-631 131 | ● 0402-631 151 |                |
| 125 | 6  | 24 | 22.2 |     |        | 12000    | 8  | POS Box | ● 9502-626 311 | ● 9502-626 251 |                |
| 125 | 13 | 28 |      | M14 |        | 12500    | 8  | POS Box | ● 1402-631 131 | ● 1402-631 151 |                |
| 125 | 13 | 28 | 22.2 |     | HP     | 12500    | 8  | POS Box | ● 6152-631 131 | ● 2202-631 151 |                |
| 150 | 13 | 37 | 22.2 |     | HP     | 12000    | 5  | POS Box | ● 0002-641 131 | ● 0002-641 151 | ● 0002-641 181 |
| 178 | 6  | 38 | 22.2 |     |        | 12000    | 12 |         | ● 4602-626 131 |                |                |
| 178 | 13 | 42 | 22.2 |     | HP     | 10000    | 6  | POS Box | ● 0002-653 131 | ● 0002-653 151 | ● 0002-653 181 |
| 230 | 6  | 57 | 22.2 |     |        | 12000    | 1  | POS Box |                | ● 4306-026 904 |                |
| 230 | 13 | 58 | 22.2 |     | HP     | 8500     | 1  | POS Box |                | ● 9502-664 151 |                |

| Ø   | A  | T    | B    | G   | Adapt. | RPM max. | DU | PKG.    | INOX 0.35      | INOX 0.50      |  |
|-----|----|------|------|-----|--------|----------|----|---------|----------------|----------------|--|
| 100 | 12 | 20   | 22.2 |     | HP     | 12500    | 4  | POS Box |                | ● 0002-621 351 |  |
| 115 | 12 | 22   |      | M14 |        | 12500    | 4  | POS Box | ● 0402-631 331 |                |  |
| 115 | 12 | 23   |      | M14 |        | 12500    | 4  | POS Box |                | ● 0402-631 351 |  |
| 115 | 12 | 23   | 22.2 |     | HP     | 12500    | 4  | POS Box | ● 0002-631 331 | ● 0002-631 351 |  |
| 125 | 6  | 24   | 22.2 |     |        | 12000    | 3  | POS Box |                | ● 9502-626 651 |  |
| 125 | 13 | 26   |      | M14 |        | 12500    | 3  | POS Box |                | ● 1402-631 351 |  |
| 125 | 13 | 27.5 | 22.2 |     | HP     | 12500    | 3  | POS Box |                | ● 2202-631 351 |  |
| 125 | 13 | 28   |      | M14 |        | 12500    | 3  | POS Box | ● 1402-631 331 |                |  |
| 125 | 13 | 28   | 22.2 |     | HP     | 12500    | 3  | POS Box | ● 2202-631 331 |                |  |
| 150 | 13 | 37   | 22.2 |     | HP     | 12000    | 3  | POS Box |                | ● 0002-641 351 |  |
| 178 | 6  | 38   | 22.2 |     | HP     | 12000    | 12 |         | ● 4612-626 331 |                |  |
| 178 | 13 | 42   | 22.2 |     | HP     | 10000    | 3  | POS Box |                | ● 0002-653 351 |  |



Appearance can vary from picture depending on variant.



EUPBWB002 | PERFECT ★★☆☆☆

## Wheel brushes, knotted wire

**Knotted wheel brush, quality craftsman quality, for general use on all common angle grinders.**

- Speedy cleaning
- Satisfactory removal rate
- Suitable for many DIY projects

**Application:** For simple deburring and cleaning work.

Available in practical PET packaging with Euro-standard hole for ideal presentation at the POS.



| Ø   | A  | T  | B    | RPM max. | DU | PKG.    | Steel 0.50     |
|-----|----|----|------|----------|----|---------|----------------|
| 115 | 10 | 20 | 22.2 | 12500    | 10 | POS PET | ● 2008-631 151 |
| 125 | 12 | 27 | 22.2 | 12500    | 12 | POS PET | ● 2118-631 151 |



Appearance can vary from picture depending on variant.



EUPBWB003 | SUPERIOR ★★★★★

## Wheel brushes, knotted wire

**Knotted wheel brush with special left/right knotting, industrial quality, for simple fitting on all common angle grinders.**

- Low-vibration and quiet operation
- Prolonged life and high removal rate
- “untwisting” of the knots during use is minimised
- Reduced kick-back
- TÜV-Süd certified (safety tested, production monitored)

**Application:** Deburring, cleaning of weld seams (slag, silicates, blue discolouring), removal of stubborn rust deposits.

| Ø   | A  | T  | B    | RPM max. | DU | Steel 0.35     | Steel 0.50     |
|-----|----|----|------|----------|----|----------------|----------------|
| 115 | 12 | 23 | 22.2 | 12500    | 10 | ● 1202-631 131 | ● 1202-631 151 |
| 125 | 13 | 28 | 22.2 | 12500    | 8  | ● 1212-631 131 | ● 1212-631 151 |
| 178 | 13 | 42 | 22.2 | 10000    | 6  | ● 1202-653 131 | ● 1202-653 151 |



# Angle Grinders

## Wheel Brushes



Appearance can vary from picture depending on variant.



EUPBWB004 | EVOLUTION ★★★★★

## Wheel brushes, knotted Osborn wire

**Knotted wheel brush, high-end quality, for simple fitting on all common angle grinders.**

- High-performance wire developed by Osborn
- Particularly cost-effective
- Long life, high tensile strength, high breaking strain and short set-up times
- Wire ensures the brush is worn uniformly

**Application:** Deburring, cleaning of weld seams (slag, silicates, blue discolouring), removal of stubborn rust deposits.

| Ø   | A  | T  | B     | G   | Adapt. | RPM max. | DU | Steel 0.35     | Steel 0.50     | INOX 0.50      |
|-----|----|----|-------|-----|--------|----------|----|----------------|----------------|----------------|
| 75  | 13 | 17 | 12.7  |     |        | 20000    | 12 | ● 9906-026 011 |                |                |
| 100 | 13 | 22 | 15.88 |     |        | 18000    | 12 | ● 9906-026 116 |                |                |
| 100 | 13 | 22 | 15.88 |     | HP     | 18000    | 12 |                | ● 9906-026 117 |                |
| 115 | 6  | 19 | 22.2  |     | HP     | 12500    | 12 |                | ● 2906-026 501 | ● 0002-626 650 |
| 125 | 6  | 24 | 22.2  |     | HP     | 12000    | 12 |                | ● 0002-626 251 | ● 0002-626 651 |
| 150 | 6  | 38 |       | M14 |        | 12000    | 10 |                | ● 9906-026 500 |                |
| 150 | 6  | 38 | 22.2  |     | HP     | 12000    | 12 |                | ● 9906-026 501 |                |
| 150 | 25 | 38 | 22.2  |     |        | 12000    | 12 | ● 9906-026 247 |                |                |
| 165 | 6  | 29 | 22.2  |     | HP     | 10000    | 12 |                | ● 0002-626 061 |                |
| 171 | 6  | 29 | 22.2  |     | HP     | 12000    | 12 |                | ● 9706-026 904 |                |
| 178 | 6  | 38 | 22.2  |     | HP     | 12000    | 12 |                | ● 9906-026 051 |                |



Appearance can vary from picture depending on variant.



EUPBWB005 | EVOLUTION ★★★★★

## Wheel brushes, knotted Osborn wire, plastic-bonded

**Plastic-bonded, knotted wheel brush, high-end quality.**

- Reduced wire breakage due to plastic bonding
- Very long service life
- More aggressive cleaning effect than conventional wheel brushes

**Application:** Removal of slag and silicates, suitable for root welds and fill layers, recommended for hand-welded joints with high levels of dirt.

| Ø   | A | T  | B    | RPM max. | DU | Steel 0.50     |
|-----|---|----|------|----------|----|----------------|
| 115 | 6 | 19 | 22.2 | 12000    | 10 | ● 5402-921 873 |
| 125 | 6 | 24 | 22.2 | 12000    | 10 | ● 9802-921 873 |
| 178 | 6 | 38 | 22.2 | 8500     | 12 | ● 9802-921 875 |





Appearance can vary from picture depending on variant.



EUPBWB006 | EVOLUTION ★★★★★

## Wheel brushes, crimped wire, plastic-bonded

**Plastic-bonded, crimped wheel brush, high-end quality.**

- Particularly narrow design for tight joints
- Precision working
- Reduced wire breakage due to plastic bonding
- Lower applied force, lower contact pressure

**Application:** Removal of silicate and weld residues, recommended for root seams welded using TIG/MIG/MAG.

| Ø     | A | T    | B     | G   | RPM max. | DU | Brass Coated Steel 0.38 |
|-------|---|------|-------|-----|----------|----|-------------------------|
| 125   | 5 | 32.5 |       | M14 | 12000    | 12 | ● 4102-921 051          |
| 152.4 | 5 | 29   | 22.23 |     | 8500     | 12 | ● 0002-921 874          |
| 178   | 3 | 41   | 22.23 |     | 8500     | 1  | ● 7702-921 875          |
| 178   | 5 | 41   | 22.23 |     | 8500     | 12 | ● 0002-921 875          |



Appearance can vary from picture depending on variant.



EUPBWB007 | SUPERIOR ★★★★★☆

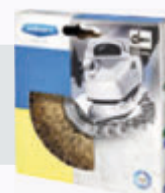
## Wheel brushes, stranded, crimped wire

**Wheel brush with Cordwire for angle grinders with M14 thread.**

- Brass-coated, stranded steel wire
- Effective woodworking, high friction on soft and hardwood
- TÜV-Süd certified (safety tested, production monitored)

**Application:** Excellently suited to texturing wood. The natural grain of the wood is emphasized and an antique or rustic effect is created. The filaments of the brush ream the softer places of the wood more than the hard ones. So they expose the wood grain and leave a sort of relief surface.

Available in practical POS box packaging with Euro-standard hole for ideal presentation at the POS.



| Ø   | A  | T    | G   | RPM max. | DU | PKG.    | Brass Coated Steel 0.27 |
|-----|----|------|-----|----------|----|---------|-------------------------|
| 115 | 12 | 27.5 | M14 | 12500    | 6  | POS Box | ● 2812-522 051          |

# Angle Grinders

## Wheel Brushes



Appearance can vary from picture depending on variant.



EUPBWB008 | SUPERIOR ★★★★★

### Wheel brushes, abrasive filament

Wheel brush for woodworking, with abrasive trim.

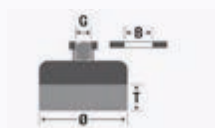
- Suited well to following exactly the material direction for texturing and finishing of wood profiles
- Varying surface patterns possible depending on grit selected
- The low weight of the plastic body ensures it is easy to guide and that work is effortless

**Application:** Removal of lacquer and pickling, cleaning, texturing, finishing and intermediate lacquer sanding.

| ø   | A  | T  | G   | RPM max. | DU | Novofil NN-S 46 | Novofil NN-S 60 | Novofil NN-S 80 |
|-----|----|----|-----|----------|----|-----------------|-----------------|-----------------|
| 140 | 55 | 30 | M14 | 4500     | 6  | ● 5421-401 913  | ● 5411-401 913  | ● 5401-401 913  |



Appearance can vary from picture depending on variant.



EUPBCB001 | SUPERIOR ★★☆☆☆

## Cup brushes, knotted wire

**Knotted cup brush, industrial quality, for use on angle grinders.**

- General-purpose talent, Osborn bestseller
- Impressive cleaning effect
- Solution of choice for cleaning large surfaces
- Long service life, low set-up costs/time
- TÜV-Süd certified (safety tested, production monitored)

**Application:** Rust removal, paint stripping, removing slag, silicate residuals and blue discolouring.

**3892-608 131** extra long Trim

Available in practical POS box packaging with Euro-standard hole for ideal presentation at the POS.



| Ø  | T  | B  | G        | RPM max. | DU | PKG.    | Steel 0.35     | Steel 0.50     |
|----|----|----|----------|----------|----|---------|----------------|----------------|
| 65 | 20 |    | M10x1,25 | 12500    | 10 | POS Box | ● 2352-608 131 | ● 2352-608 151 |
| 65 | 20 |    | M10x1,5  | 12500    | 10 | POS Box | ● 0102-608 131 | ● 0102-608 151 |
| 65 | 20 |    | M14      | 12500    | 10 | POS Box | ● 0002-608 131 | ● 0002-608 151 |
| 65 | 20 | 16 |          | 12500    | 10 | POS Box | ● 1602-608 131 | ● 1602-608 151 |
| 65 | 30 |    | M14      | 12500    | 10 |         | ● 3892-608 131 |                |

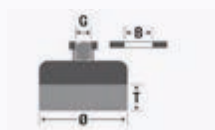
| Ø  | T  | B  | G        | RPM max. | DU | PKG.    | INOX 0.35      | INOX 0.50      |
|----|----|----|----------|----------|----|---------|----------------|----------------|
| 65 | 20 |    | M10x1,25 | 12500    | 6  | POS Box | ● 2352-608 331 |                |
| 65 | 20 |    | M10x1,5  | 12500    | 6  | POS Box | ● 0102-608 331 | ● 0102-608 351 |
| 65 | 20 |    | M14      | 12500    | 6  | POS Box | ● 0002-608 331 | ● 0002-608 351 |
| 65 | 20 | 16 |          | 12500    | 6  | POS Box | ● 1602-608 331 |                |

# Angle Grinders

## Cup Brushes



Appearance can vary from picture depending on variant.



EUPBCB002 | SUPERIOR ★★☆☆☆

## Cup brushes, knotted wire

**Knotted cup brush, industrial quality, for use on angle grinders.**

- Long life, low set-up costs / short set-up times
- Impressive cleaning effect
- Solution of choice for cleaning large surfaces
- Additional stabilisation of the trimming by the support ring
- Support ring is easy to remove. Afterwards the left trim length is useable

**Application:** Rust removal, paint stripping, removing slag, silicate residuals and blue discolouring.

Available in practical POS box packaging with Euro-standard hole for ideal presentation at the POS.



### Did you know?

The support ring is there to stabilise the fill material. After the free filament has worn down, the support ring can be removed, enabling to continue work with the filament material available.

Scan the QR code for video instructions or visit our YouTube channel.

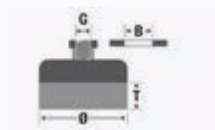


| Ø   | T  | G    | RPM max. | DU | PKG.    | Steel 0.35     | Steel 0.50     | Steel 0.80     |
|-----|----|------|----------|----|---------|----------------|----------------|----------------|
| 75  | 20 | M14  | 11000    | 10 | POS Box | ● 9908-608 132 | ● 9908-608 152 |                |
| 80  | 20 | 5/8" | 8500     | 6  | POS Box | ● 0802-608 133 | ● 0802-608 153 | ● 0802-608 183 |
| 80  | 20 | M14  | 8500     | 6  | POS Box | ● 0002-608 133 | ● 0002-608 153 | ● 0002-608 183 |
| 100 | 20 | 5/8" | 8500     | 3  | POS Box | ● 0802-608 134 | ● 0802-608 154 | ● 0802-608 184 |
| 100 | 20 | M14  | 8500     | 3  | POS Box | ● 0002-608 134 | ● 0002-608 154 | ● 0002-608 184 |
| 120 | 20 | 5/8" | 6500     | 4  | POS Box | ● 0802-608 135 | ● 0802-608 155 | ● 0802-608 185 |
| 120 | 20 | M14  | 6500     | 4  | POS Box | ● 0002-608 135 | ● 0002-608 155 | ● 0002-608 185 |

| Ø   | T  | G   | RPM max. | DU | PKG.    | INOX 0.35      | INOX 0.50      |  |
|-----|----|-----|----------|----|---------|----------------|----------------|--|
| 80  | 20 | M14 | 8500     | 3  | POS Box | ● 0002-608 333 | ● 0002-608 353 |  |
| 100 | 20 | M14 | 8500     | 3  | POS Box | ● 0002-608 334 | ● 0002-608 354 |  |



Appearance can vary from picture depending on variant.



EUPBCB003 | EVOLUTION ★★★★★

## Cup brushes, knotted wire

**Knotted cup brush, high-end quality, for use on angle grinders.**

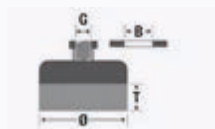
- High-performance wire developed by Osborn
- Particularly cost-effective
- Long life, high tensile strength, high breaking strain and short set-up times
- Special feature: individual knot ends are slightly open, so that the wire tips are in use immediately and directly
- Higher removal rate, aggressive cleaning performance

**Application:** Paint/rust removal, deburring, descaling, removal of slag, silicate residues and blue discolouration, cleaning of fill layers and surfaces in the oil and gas industries.

| Ø  | T  | G    | DU | Steel 0.50     |
|----|----|------|----|----------------|
| 90 | 32 | 5/8" | 6  | ● 9906-033 126 |
| 90 | 32 | M14  | 6  | ● 9906-033 125 |



Appearance can vary from picture depending on variant.



EUPBCB004 | PERFECT ★★☆☆☆

## Cup brushes, knotted wire

**Knotted cup brush, craftsman quality, for use on angle grinders.**

- Osborn bestseller in the DIY sector
- Good cleaning performance
- Best price/performance ratio
- Easy cleaning of larger areas

**Application:** Paint/rust removal, removal of slag.

Available in practical PET packaging with Euro-standard hole for ideal presentation at the POS.



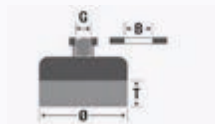
| Ø   | T  | G   | RPM max. | DU | PKG.    | Steel 0.35     | Steel 0.50     |
|-----|----|-----|----------|----|---------|----------------|----------------|
| 65  | 20 | M14 | 12500    | 10 | POS PET | ● 2008-608 131 | ● 2008-608 151 |
| 75  | 27 | M14 | 11000    | 10 | POS PET |                | ● 2008-608 152 |
| 80  | 22 | M14 | 8500     | 10 | POS PET |                | ● 2008-608 153 |
| 100 | 22 | M14 | 8500     | 5  | POS PET |                | ● 2008-608 154 |

# Angle Grinders

## Cup Brushes



Appearance can vary from picture depending on variant.



EUPBCB005 | SUPERIOR ★★☆☆☆

## Cup brushes, crimped wire

**Crimped cup brush, industrial quality, for use on angle grinders.**

- Flexible trim material that adapts perfectly to the workpiece contour
- The optimum angle for the brush to operate at is already specified by the trim shape of the brush
- TÜV-Süd certified (safety tested, production monitored)

**Application:** Cleaning, removal of paint, rust, slag, blue discolouration.

Available in practical POS box packaging with Euro-standard hole for ideal presentation at the POS.

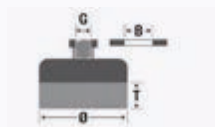


| Ø  | T  | G        | B  | RPM max. | DU | PKG.    | Steel 0.20     | Steel 0.30     |
|----|----|----------|----|----------|----|---------|----------------|----------------|
| 60 | 21 | M10x1,5  |    | 12500    | 10 | POS Box |                | ● 0102-613 161 |
| 60 | 21 | M14      |    | 12500    | 10 | POS Box | ● 0002-613 141 | ● 0002-613 161 |
| 75 | 23 |          | 16 | 12500    | 10 | POS Box |                | ● 1602-613 162 |
| 75 | 23 | 5/8"     |    | 12500    | 10 | POS Box | ● 0802-613 142 | ● 0802-613 162 |
| 75 | 23 | M10x1,25 |    | 12500    | 10 | POS Box | ● 5652-613 142 |                |
| 75 | 23 | M10x1,5  |    | 12500    | 10 | POS Box | ● 0102-613 142 | ● 0102-613 162 |
| 75 | 23 | M14      |    | 12500    | 10 | POS Box | ● 0002-613 142 |                |
| 75 | 25 | M14      |    | 12500    | 10 | POS Box |                | ● 0002-613 162 |

| Ø  | T  | G        | B  | RPM max. | DU | PKG.    | INOX 0.30      | Brass 0.30     |
|----|----|----------|----|----------|----|---------|----------------|----------------|
| 60 | 21 |          | 16 | 12500    | 4  | POS Box | ● 1602-613 361 |                |
| 60 | 21 | M10x1,25 |    | 12500    | 10 | POS Box |                | ● 4912-613 561 |
| 60 | 21 | M14      |    | 12500    | 4  | POS Box | ● 0002-613 361 |                |
| 60 | 21 | M14      |    | 12500    | 10 | POS Box |                | ● 4902-613 561 |
| 75 | 23 | 5/8"     |    | 12500    | 4  | POS Box | ● 0802-613 362 |                |
| 75 | 25 | M14      |    | 12500    | 10 | POS Box | ● 0002-613 362 | ● 4902-613 562 |



Appearance can vary from picture depending on variant.



EUPBCB006 | SUPERIOR ★★★★★

## Cup brushes, crimped wire

**Crimped cup brush, industrial quality, for use on angle grinders.**

- Flexible trim material that adapts perfectly to the workpiece contour
- The optimum angle for the brush to operate is already specified by the trim shape of the brush
- TÜV-Süd certified (safety tested, production monitored)

**Application:** Cleaning, removal of paint, rust, slag, blue discolouration.

Available in practical POS box packaging with Euro-standard hole for ideal presentation at the POS.



| Ø   | T  | G    | RPM max. | DU | PKG.    | Steel 0.20     | Steel 0.30     | Steel 0.50     |
|-----|----|------|----------|----|---------|----------------|----------------|----------------|
| 80  | 25 | M14  | 8500     | 5  | POS Box | ● 0002-613 143 | ● 0002-613 163 | ● 0002-613 193 |
| 100 | 30 | 5/8" | 8500     | 3  | POS Box | ● 0802-613 144 | ● 0802-613 164 | ● 0802-613 194 |
| 100 | 30 | M14  | 8500     | 3  | POS Box | ● 0002-613 144 |                | ● 0002-613 194 |
| 100 | 30 | M14  | 8500     | 4  | POS Box |                | ● 0002-613 164 |                |
| 125 | 30 | 5/8" | 6500     | 4  | POS Box |                | ● 0802-613 165 | ● 0802-613 195 |
| 125 | 30 | M14  | 6500     | 4  | POS Box | ● 0002-613 145 | ● 0002-613 165 |                |
| 125 | 35 | M14  | 6500     | 4  | POS Box |                |                | ● 0002-613 195 |
| 150 | 40 | 5/8" | 4500     | 3  | POS Box |                | ● 0802-613 166 | ● 0802-613 196 |
| 150 | 40 | M14  | 4500     | 3  | POS Box | ● 0002-613 146 | ● 0002-613 166 | ● 0002-613 196 |

| Ø   | T  | G    | RPM max. | DU | PKG.    | INOX 0.30      | Brass 0.30     |  |
|-----|----|------|----------|----|---------|----------------|----------------|--|
| 80  | 25 | 5/8" | 8500     | 4  | POS Box | ● 0802-613 363 |                |  |
| 80  | 25 | M14  | 8500     | 4  | POS Box | ● 0002-613 363 |                |  |
| 80  | 25 | M14  | 8500     | 5  | POS Box |                | ● 4902-613 563 |  |
| 100 | 25 | M14  | 8500     | 3  | POS Box | ● 0002-613 364 |                |  |
| 100 | 30 | 5/8" | 8500     | 3  | POS Box | ● 0802-613 364 |                |  |
| 125 | 30 | M14  | 6500     | 2  | POS Box | ● 0002-613 365 |                |  |

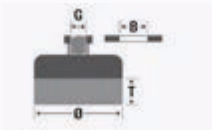


# Angle Grinders

## Cup Brushes



Appearance can vary from picture depending on variant.



EUPBCB007 | PERFECT ★★☆☆☆

### Cup brushes, crimped wire

Crimped cup brush, craftsman quality, for use on angle grinders.

- Osborn bestseller in the DIY sector
- Flexible trim material that adapts perfectly to the workpiece contour
- Good cleaning performance
- Best price/performance ratio

**Application:** Paint stripping and rust removal from surfaces.

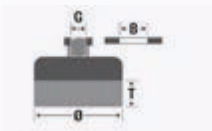
Available in practical POS box packaging with Euro-standard hole for ideal presentation at the POS.



| Ø   | T  | G   | RPM max. | DU | PKG.    | Steel 0.30     | Brass Coated Steel 0.30 |
|-----|----|-----|----------|----|---------|----------------|-------------------------|
| 60  | 18 | M14 | 12500    | 10 | POS PET | ● 2008-613 161 | ● 2008-613 061          |
| 75  | 25 | M14 | 12500    | 10 | POS PET | ● 2008-613 162 | ● 2008-613 062          |
| 80  | 25 | M14 | 8500     | 10 | POS PET | ● 2008-613 163 | ● 2008-613 063          |
| 100 | 25 | M14 | 8500     | 5  | POS PET | ● 2008-613 164 | ● 2008-613 064          |
| 125 | 30 | M14 | 6500     | 5  | POS PET | ● 2008-613 165 | ● 2008-613 065          |



Appearance can vary from picture depending on variant.



EUPBCB008 | XTREME ★★★★★★

## Cup brushes, crimped Xtreme wire

**Crimped cup brush with stranded, special Xtreme wire for use on angle grinders.**

- Four times longer service life than common, crimped cup brushes, Highest removal rate in this segment
- Risks of wire breaks low to none, Ergonomic, low contact pressure necessary
- Effective cleaning performance, Creates a uniform, almost satin surface finish
- Combines the aggressive cleaning performance of knotted brushes with the flexibility of soft, crimped brushes
- TÜV-Süd certified (safety tested, production monitored)

**Application:** Deburring, edge rounding, removal of rust, paint, scales, slag, silicate residues and blue discolouration.

Available in practical POS box packaging with Euro-standard hole for ideal presentation at the POS.



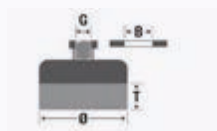
| Ø   | T  | G   | RPM max. | DU | PKG.    | Steel 0.30     |
|-----|----|-----|----------|----|---------|----------------|
| 60  | 20 | M14 | 12500    | 10 | POS Box | ● 3902-613 161 |
| 75  | 25 | M14 | 12500    | 10 | POS Box | ● 3912-613 163 |
| 80  | 25 | M14 | 12500    | 5  | POS Box | ● 3902-613 163 |
| 100 | 22 | M14 | 8500     | 4  | POS Box | ● 3902-613 164 |

# Angle Grinders

## Cup Brushes



Appearance can vary from picture depending on variant.



EUPBCB009 | SUPERIOR ★★★★★

### Cup brushes, arbor hole, abrasive filament

**Cup brush with abrasive trim, industrial quality, for use on angle grinders.**

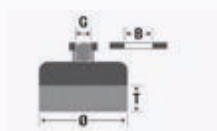
- Powerful high-tech material
- Pinpoint, controlled application on surfaces
- Very flexible trim material; If individual filaments lie flat during use, continue working with the edge nevertheless because the length of the trim material has end-to-end abrasive grit
- Different grits are available for selection: the higher the grit size, the finer the surface pattern

**Application:** Paint removal, deburring and cleaning of metal and wooden surfaces.

| Ø   | T  | B    | G | RPM max. | DU | Novofil NN-S 80 | Novofil NN-S 120 | Novofil NN-S 180 |
|-----|----|------|---|----------|----|-----------------|------------------|------------------|
| 100 | 25 | 22.2 |   | 8500     | 3  | ● 8812-607 914  | ● 2312-607 914   | ● 1802-607 914   |



Appearance can vary from picture depending on variant.



EUPBCB010 | SUPERIOR ★★★★★

### Cup brushes, abrasive filament

**Punched disc brush with abrasive trim material for woodworking, for use on angle grinders with adjustable speed.**

- For use on large surfaces
- Varying surface pattern possible depending on grit selected
- The low weight of the plastic body ensures it is easy to guide and that work is effortless

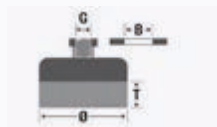
**Application:** Particularly well suited for removing lacquer and stains, for cleaning, texturing, finshing and intermediate lacquer sanding.

- 9301-614 916** Grit 46 – For creating a depth texture in the wood
- 9311-614 916** Grit 60 – For removing minor to medium levels of dirt, and uniform texturing of the wood
- 9321-614 916** Grit 80 – Preparation before finishing, evens out minor surface irregularities
- 9331-614 916** Korn 120 – Erzeugung des finalen Schliff auf der Holzoberfläche

| A   | T  | G   | RPM max. | DU | Novofil NN-S 46 | Novofil NN-S 60 | Novofil NN-S 80 | Novofil NN-S 120 |
|-----|----|-----|----------|----|-----------------|-----------------|-----------------|------------------|
| 130 | 50 | M14 | 2500     | 4  | ● 9301-614 916  | ● 9311-614 916  | ● 9321-614 916  | ● 9331-614 916   |



Appearance can vary from picture depending on variant.



EUPBCB011 | SUPERIOR ★★☆☆☆

## Cup brushes, abrasive filament

**Cup brush with abrasive Novofil® trim material, industrial quality, for use on angle grinders.**

- Long service life
- Low set-up costs / short set-up times
- For effortless and efficient working
- Grit 46 For creating a depth texture in the wood, Grit 60 For removing minor to medium levels of dirt, and uniform texturing of the wood
- Grit 80 Preparation before finishing, evens out minor surface irregularities.
- Grit 120 Creation of the final finish on the wood surface

**Application:** Very well suited to treating vertical surfaces and walls made of assembled flat or round wood elements.

**7902-613 196** Grit 46 – For creating a depth texture in the wood

**7922-613 196** Grit 60 – For removing minor to medium levels of dirt, and uniform texturing of the wood

**7932-613 196** Grit 80 – Preparation before finishing, evens out minor surface irregularities

**7942-613 196** Grit 120 – Creation of the final finish on the wood surface

| Ø   | T  | G   | RPM max. | DU | Novofil NH-S 46 | Novofil NH-S 60 | Novofil NH-S 80 | Novofil NN-S 120 |
|-----|----|-----|----------|----|-----------------|-----------------|-----------------|------------------|
| 150 | 25 | M14 | 8500     | 2  | ● 7902-613 196  | ● 7922-613 196  | ● 7932-613 196  | ● 7942-613 196   |

# Angle Grinders

## Bevel Brushes



Appearance can vary from picture depending on variant.



EUPBBB001 | SUPERIOR ★★☆☆☆

## Bevel brushes, twist knot wire

**Knotted bevel brush, industrial quality, for use on angle grinders.**

- Aggressive cleaning performance
- Long service life
- Combines the best properties of a cup brush with those of a wheel brush
- Workpieces with large areas and difficult to access places can be treated perfectly
- TÜV-Süd certified (safety tested, production monitored)

**Application:** Deburring, removal of rust, paint, slag, silicates and blue discolouration on complex workpieces.

Available in practical POS box packaging with Euro-standard hole for ideal presentation at the POS.



| Ø   | A  | T  | G        | Knots | RPM max. | DU | PKG.    | Steel 0.35     | Steel 0.50     |
|-----|----|----|----------|-------|----------|----|---------|----------------|----------------|
| 100 | 13 | 22 | M10x1,25 | 18    | 12500    | 10 | POS Box | ● 4802-622 131 | ● 2352-622 151 |
| 100 | 13 | 22 | M10x1,5  | 18    | 12500    | 10 | POS Box | ● 0102-622 131 | ● 0102-622 151 |
| 100 | 13 | 22 | M14      | 18    | 12500    | 10 | POS Box | ● 0002-622 131 | ● 0002-622 151 |
| 100 | 13 | 22 | M14      | 22    | 12500    | 10 | POS Box | ● 0002-623 131 |                |
| 115 | 15 | 20 | 5/8"     | 18    | 12500    | 10 | POS Box | ● 0802-632 131 | ● 0802-632 151 |
| 115 | 15 | 20 | M14      | 18    | 12500    | 10 | POS Box | ● 0002-632 131 | ● 0002-632 151 |
| 125 | 15 | 23 | M14      | 24    | 12500    | 10 | POS Box | ● 3602-632 131 | ● 2902-632 151 |

| Ø   | A  | T  | G        | Knots | RPM max. | DU | PKG.    | INOX 0.35      | INOX 0.50      |
|-----|----|----|----------|-------|----------|----|---------|----------------|----------------|
| 100 | 13 | 22 | M10x1,25 | 18    | 12500    | 10 | POS Box | ● 4802-622 331 | ● 2352-622 351 |
| 100 | 13 | 22 | M10x1,5  | 18    | 12500    | 10 | POS Box | ● 0102-622 331 | ● 0102-622 351 |
| 100 | 13 | 22 | M14      | 18    | 12500    | 10 | POS Box | ● 0002-622 331 | ● 0002-622 351 |
| 115 | 15 | 20 | M14      | 18    | 12500    | 5  | POS Box | ● 0002-632 331 |                |
| 115 | 15 | 20 | M14      | 18    | 12500    | 10 | POS Box |                | ● 0002-632 351 |
| 125 | 15 | 23 | M14      | 24    | 12500    | 10 | POS Box | ● 3602-632 331 | ● 3602-632 351 |



Appearance can vary from picture depending on variant.



EUPBBB002 | PERFECT ★★☆☆☆

Bevel brushes, twist knot wire

Knotted bevel brush, craftsman quality, for use on angle grinders.

- Good cleaning performance and service life
- Best price/performance ratio
- Processing of large surfaces and hard to reach areas

**Application:** Rust removal, paint stripping, deburring.

Available in practical PET packaging with Euro-standard hole for ideal presentation at the POS.



| ø   | A  | T  | G   | RPM max. | DU | PKG.    | Steel 0.50     |
|-----|----|----|-----|----------|----|---------|----------------|
| 100 | 13 | 22 | M14 | 12500    | 8  | POS PET | ● 2008-622 151 |

# Angle Grinders

## Bevel Brushes



Appearance can vary from picture depending on variant.



EUPBBB003 | SUPERIOR ★★★★★

## Bevel brushes, crimped wire

**Crimped bevel brush, industrial quality, for use on angle grinders.**

- Flexible trim material, adjusts perfectly to the workpiece
- The longer the trim material, the more flexible the brush. Combines the best properties of a cup brush with those of a wheel brush
- Processing of large surfaces and hard to reach areas
- Depending on the workpiece geometry, the brush is available in different working widths guaranteeing pinpoint deployment
- TÜV-Süd certified (safety tested, production monitored)

**Application:** Rust removal, paint stripping, deburring, silicates.

| Ø   | A  | T  | G        | RPM max. | DU | Steel 0.30     | INOX 0.20      |
|-----|----|----|----------|----------|----|----------------|----------------|
| 100 | 10 | 20 | M10x1,25 | 12500    | 10 | ● 2352-512 161 |                |
| 100 | 10 | 20 | M10x1,5  | 12500    | 10 | ● 0102-512 161 |                |
| 100 | 10 | 20 | M14      | 12500    | 10 | ● 0002-512 161 |                |
| 100 | 20 | 20 | M10x1,25 | 12500    | 10 |                | ● 2352-512 342 |
| 100 | 20 | 20 | M10x1,5  | 12500    | 10 | ● 0102-512 162 | ● 0102-512 342 |
| 100 | 20 | 20 | M14      | 12500    | 10 | ● 0002-512 162 | ● 0002-512 342 |
| 125 | 10 | 25 | M14      | 12500    | 10 | ● 0002-514 161 |                |

| Ø   | A  | T  | G        | RPM max. | DU | INOX 0.30      | Brass Coated Steel 0.30 |
|-----|----|----|----------|----------|----|----------------|-------------------------|
| 100 | 10 | 20 | M14      | 12500    | 10 | ● 0002-512 361 | ● 0002-512 061          |
| 100 | 20 | 20 | M10x1,25 | 12500    | 10 | ● 2352-512 362 |                         |
| 100 | 20 | 20 | M10x1,5  | 12500    | 10 | ● 0102-512 362 |                         |
| 100 | 20 | 20 | M14      | 12500    | 10 | ● 0002-512 362 | ● 0002-512 062          |
| 125 | 10 | 25 | M14      | 12500    | 10 | ● 0002-514 361 |                         |





Appearance can vary from picture depending on variant.



EUPBBB004 | PERFECT ★★☆☆☆

## Bevel brushes, crimped wire

**Crimped bevel brush, craftsman quality, for use on angle grinders.**

- Ideal for processing areas and surfaces difficult to access
- Suitable for easy to semi-difficult cleaning work
- Best price/performance ratio

**Application:** Edge rounding, paint/rust removal.

Available in practical PET packaging with Euro-standard hole for ideal presentation at the POS.



| Ø   | A  | T  | G   | RPM max. | DU | PKG.    | Steel 0.30     | Brass Coated Steel 0.30 |
|-----|----|----|-----|----------|----|---------|----------------|-------------------------|
| 100 | 10 | 20 | M14 | 12500    | 10 | POS PET |                | ● 2008-512 061          |
| 100 | 16 | 20 | M14 | 12500    | 10 | POS PET | ● 2008-512 161 |                         |



Appearance can vary from picture depending on variant.



EUPBBB006 | XTREME ★★★★★★

## Bevel brushes, Xtreme Wire, crimped

**Bevel Brush with crimped Xtreme wire in high-end quality for use on angle grinders.**

- Up to 8 times longer service life than conventional crimped wire brushes
- Flexible Xtreme wire, adjusts perfectly to the workpiece
- Combines the best properties of a cup brush with those of a wheel brush
- Processing of large surfaces and hard to reach areas
- Low vibration, low noise, unique satin finish

**Application:** Derusting, paint stripping, deburring, removal of silicates

| Ø   | A  | T  | G   | RPM max. | DU | Steel 0.30     |
|-----|----|----|-----|----------|----|----------------|
| 100 | 10 | 20 | M14 | 12500    | 10 | ● 3902-512 161 |

# Angle Grinders

## Technical and General Information



### Cordless is King.

More power, longer runtimes and all wireless. These are the new generations of cordless tools that make it easy to work wherever there is no power socket. The battery runtimes and performance of the tools have made a quantum leap in the last year. This makes them interesting for more and more users. Particularly in the construction industry, in sanitary and heating construction, caretakers, but also fire brigades, road maintenance and other mobile helpers, the devices are now indispensable without electricity.

**Important:** Please note that our cordless powertool accessories are also suitable for variable-speed angle grinders



### Why special tools?

Cordless power tools are commonly used by mobile services, where the full range of accessories is not available. Users therefore need universal tools which can tackle a variety of tasks on different materials.

In this way the amount of accessories to be carried along on a construction site can be reduced when working on steel, stainless steel and wood.

Commonly cordless angle grinders run with a 30 % reduced working speed compared to usual angle grinders. Having specifically developed accessories for common cordless power tools means that the perfect result of brushes can be reached with a speed of 7,000 to 8,000 RPM.

Osborn Brushes are lighter and therefore prolong the battery life between recharges by 20-25 %.

### We make it easy for you!

Osborn has developed accessories which are flexible in use, light weight, easy to handle and assure highest precision. The end result will meet all your expectations and fulfill all aspects of work safety. This is the only way to work effectively and get the best out of your cordless power tool.

### Benefits

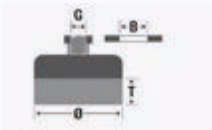
- Low weight
- Precision working
- Multifunctional
- Ease of use
- Reduced imbalance and vibration
- Longer battery life (by 20 to 25 %)
- Fewer charging cycles
- Universal usage on all materials

### Good to know

Refer to the respective sections for the grinding and polishing products that are suitable for use on battery-operated angle grinders.



Appearance can vary from picture depending on variant.



EUPBCB012 | SUPERIOR ★★★★★

### Cup brushes, crimped wire

**Crimped cup brush, industrial quality, for use on cordless angle grinders and variable-speed angle grinders.**

- Low weight
- Extended battery life
- Multifunctional
- reduced imbalance and vibration
- TÜV-Süd certified

**Application:** Cleaning, satin finishing, smoothing and texturing of different materials.

Available in practical PET packaging with Euro-standard hole for ideal presentation at the POS.



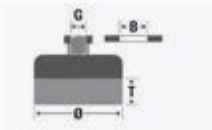
| Ø  | T  | G   | RPM max. | DU | PKG.    | Brass 0.30     |
|----|----|-----|----------|----|---------|----------------|
| 60 | 21 | M14 | 12500    | 5  | POS PET | ● 6912-613 561 |

# Angle Grinders

Tools for Cordless Machines



Appearance can vary from picture depending on variant.



EUPBCB013 | SUPERIOR ★★☆☆☆

## Cup brushes, abrasive filament

Cup brush with abrasive trim material, industrial quality, for use on cordless angle grinders and variable-speed angle grinders.

- Weight-optimised
- TÜV-Süd certified
- Very flexible trim material; If individual filaments lie flat during use, continue working with the edge nevertheless because the length of the trim material has end-to-end abrasive grit
- Extended battery life
- reduced imbalance and vibration

**Application:** Cleaning, satin finishing, smoothing and texturing of different materials.

Available in practical PET packaging with Euro-standard hole for ideal presentation at the POS.



| ø  | T  | G   | ø Fill | RPM max. | DU | PKG.    | Novofil NH-S 46 |
|----|----|-----|--------|----------|----|---------|-----------------|
| 60 | 21 | M14 | 1.6    | 12500    | 5  | POS PET | ● 6912-613 891  |



Appearance can vary from picture depending on variant.



EUPBBB005 | SUPERIOR ★★★★★

## Bevel brushes, abrasive filament

Bevel brush with abrasive trim material Novofil NH-S, industrial quality, for use on cordless angle grinders and variable-speed angle grinders.

- Weight-optimised
- TÜV-Süd certified
- Extended battery life
- This means workpieces with large areas and difficult to access places can be treated perfectly
- Reduced imbalance and vibration

**Application:** Weld seam finishing for TIG/MIG/MAG, paint removal, cleaning, texturing, deburring.

Available in practical PET packaging with Euro-standard hole for ideal presentation at the POS.



| Ø   | A  | T  | G   | Ø Fill | RPM max. | DU | PKG.    | Novofil NH-S 46 |
|-----|----|----|-----|--------|----------|----|---------|-----------------|
| 100 | 10 | 20 | M14 | 1.6    | 12500    | 5  | POS PET | ● 6912-622 891  |

# Angle Grinders

## Coarse Cleaning Fleece



Appearance can vary from picture depending on variant.



EUGMCF009 | SUPERIOR ★★★★★

### Coarse cleaning fleece for angle grinders

Coarse cleaning fleece on glass fibre backing. Suitable for cleaning and polishing all surfaces. Cleaning fleeces attain the best results in sanding and cleaning metals, stainless steel, wood and plastic, and can be used as a preliminary stage before polishing. They are made of intertwined nylon tfibres which are immersed in synthetic resin and gently hardened. They are available with a glass fibre backing or for the use with straight or cylindrical grinders.

- Removes old paint, rust and weld spots without scratching the surface of the workpiece
- Cleaning and smoothing wood and plastic

**Application:** General-purpose use for metals, stainless steel, wood and plastic.

**Please note:** Coarse cleaning fleeces are not suitable for edge finishing. They remove foreign matter and are non-stock removing.

| ø   | B     | Shape | RPM max. | DU | Item Number    |
|-----|-------|-------|----------|----|----------------|
| 115 | 22.23 | flat  | 11000    | 10 | ● 6700-001 100 |
| 125 | 22.23 | flat  | 10000    | 10 | ● 6700-002 100 |
| 180 | 22.23 | flat  | 8500     | 10 | ● 6700-003 100 |



Appearance can vary from picture depending on variant.

EUGMFD001 | PERFECT ★★☆☆☆

## ALOX POWER

Cost-effective product for processing steel and wood. A tough, hard abrasive grain enables good removal rates, particularly when grinding surfaces. The glass fibre backing is characterised by an even grinding finish until the abrasive grain is completely consumed. No scratches appear on the workpiece.

- Quick machining
- Fine surface structure
- Good lifetime

**Application:** Very suitable for processing unalloyed steel, alloyed steel and tool steel. Also suitable for weldseams, wood and plastic.

| Ø   | B     | RPM max. | DU | flat 40        | flat 60        | flat 80        | flat 120       |
|-----|-------|----------|----|----------------|----------------|----------------|----------------|
| 115 | 22.23 | 13300    | 10 | ● 5231-004 100 | ● 5231-006 100 | ● 5231-007 100 | ● 5231-009 100 |
| 125 | 22.23 | 12250    | 10 | ● 5232-004 100 | ● 5232-006 100 | ● 5232-007 100 | ● 5232-009 100 |

| Ø   | B     | RPM max. | DU | tapered 40     | tapered 60     | tapered 80     |  |
|-----|-------|----------|----|----------------|----------------|----------------|--|
| 115 | 22.23 | 13300    | 10 | ● 5231-204 100 | ● 5231-206 100 | ● 5231-207 100 |  |
| 125 | 22.23 | 12250    | 10 | ● 5232-204 100 | ● 5232-206 100 | ● 5232-207 100 |  |



## Angle Grinders

### Flap Discs for Grinding



Appearance can vary from picture depending on variant.

EUGMFD003 | PERFECT ★★☆☆☆

## ZIRCON POWER

**All-round flap disc with zirconium corundum band on a cotton polyester cloth. Good removal rate and service life.**

- Ideal for surface grinding on steel and stainless steel
- High removal rate and effortless work without clogging
- The glass fibre backing is characterised by an even grinding finish until the abrasive grain is completely consumed. No scratches appear on the workpiece.

**Application:** Very suitable for processing stainless steel, (un)alloyed steel, weldseams, cast. Also suitable for wood and plastic.

| Ø   | B     | RPM max. | DU | flat 40        | flat 60        | flat 80        |
|-----|-------|----------|----|----------------|----------------|----------------|
| 115 | 22.23 | 13300    | 10 | ● 5231-184 100 | ● 5231-186 100 | ● 5231-187 100 |
| 125 | 22.23 | 12250    | 10 | ● 5232-184 100 | ● 5232-186 100 | ● 5232-187 100 |

| Ø   | B     | RPM max. | DU | tapered 40     | tapered 60     | tapered 80     |
|-----|-------|----------|----|----------------|----------------|----------------|
| 115 | 22.23 | 13300    | 10 | ● 5231-384 100 | ● 5231-386 100 | ● 5231-387 100 |
| 125 | 22.23 | 12250    | 10 | ● 5232-384 100 | ● 5232-386 100 | ● 5232-387 100 |



Appearance can vary from picture depending on variant.

EUGMFD006 | SUPERIOR ★★☆☆☆

## ZIRCON PLUS

**Top-quality zirconium flap disc. Well-suited for deburring, processing welding seams and surface grinding. Very balanced and universally applicable flap disc with brilliant removal rate and outstanding service life. For processing steel and stainless steel. A true four-star all-round disc.**

- Ideal for processing edges
- Also very good for surface grinding
- Outstanding grinding performance with superior lifetime
- High removal rate and effortless work without clogging
- Very good surface quality on workpiece

**Application:** Suits perfectly for (stainless) steel sheets and cast. Very suitable for (un)alloyed steel and weldseams. Also suitable for wood and plastic.

| ø   | B     | RPM max. | DU | flat 40        | flat 60        | flat 80        |
|-----|-------|----------|----|----------------|----------------|----------------|
| 115 | 22.23 | 13300    | 10 | ● 5241-104 100 | ● 5241-106 100 | ● 5241-107 100 |
| 125 | 22.23 | 12250    | 10 | ● 5242-104 100 | ● 5242-106 100 | ● 5242-107 100 |

| ø   | B     | RPM max. | DU | tapered 40     | tapered 60     | tapered 80     |
|-----|-------|----------|----|----------------|----------------|----------------|
| 115 | 22.23 | 13300    | 10 | ● 5241-304 100 | ● 5241-306 100 | ● 5241-307 100 |
| 125 | 22.23 | 12250    | 10 | ● 5242-304 100 | ● 5242-306 100 | ● 5242-307 100 |

## Angle Grinders

### Flap Discs for Grinding



Appearance can vary from picture depending on variant.

EUGMFD007 | SUPERIOR ★★★★★

## ZIRCON PRIME G-AZ

**Special flap disc with zirconium corundum. This abrasive grain cloth is less hard, but very tough, and gives the disc very good all purpose characteristics.**

- Robust abrasive belt for high demands
- Brilliant grinding capacity
- Outstanding service
- It is used for such demanding operations as deburring, machining welding seams and breaking edges
- The glass fibre backing is characterised by an even grinding finish until all of the abrasive grain has been worn away. Leaves no scratches on the workpiece

**Application:** Suits perfectly for (stainless) steel sheets and cast. Very suitable for (un)alloyed steel and weldseams. Also suitable for wood and plastic.

| Ø   | B     | RPM max. | DU | flat 40        | flat 60        | flat 80        | flat 120       |
|-----|-------|----------|----|----------------|----------------|----------------|----------------|
| 115 | 22.23 | 13300    | 10 | ● 5211-104 100 | ● 5211-106 100 | ● 5211-107 100 | ● 5211-109 100 |
| 125 | 22.23 | 12250    | 10 | ● 5212-104 100 | ● 5212-106 100 | ● 5212-107 100 | ● 5212-109 100 |

| Ø   | B     | RPM max. | DU | tapered 40     | tapered 60     | tapered 80     |  |
|-----|-------|----------|----|----------------|----------------|----------------|--|
| 115 | 22.23 | 13300    | 10 | ● 5211-304 100 | ● 5211-306 100 | ● 5211-307 100 |  |
| 125 | 22.23 | 12200    | 10 |                | ● 5212-306 100 |                |  |
| 125 | 22.23 | 12250    | 10 | ● 5212-304 100 |                | ● 5212-307 100 |  |



Appearance can vary from picture depending on variant.

EUGMFD011 | SUPERIOR ★★☆☆☆

## CERA PLUS

Flap disc with self-sharpening ceramic grain, which permanently enables an extremely high removal rate and guarantees a long service life. Outstanding results for surface and edge grinding of steel or stainless steel. The robust polyester backing and a full resin bond with additives that actively support grinding guarantee that the abrasive grain on the backing remains resistant to wear, even under high stress. This makes CERA PLUS ideal for extreme grinding work or demanding special tasks.

- Extremely aggressive removal rate with a minimum of effort
- Substantial time savings, clear plus in terms of service life
- Highly resilient
- Self-sharpening
- Cool grinding on surfaces and edges, reduces thermal discolouration on the workpiece

**Application:** Suits perfectly for high alloy steel, titanium alloys, nickel-base alloys, chrome and chrome-nickel-steel. Very suitable for brass, bronze and cast.

| ø   | B     | RPM max. | DU | flat 40        | flat 60        | flat 80        |
|-----|-------|----------|----|----------------|----------------|----------------|
| 115 | 22.23 | 13300    | 10 | ● 5241-434 100 | ● 5241-436 100 | ● 5241-437 100 |
| 125 | 22.23 | 12250    | 10 | ● 5242-434 100 | ● 5242-436 100 | ● 5242-437 100 |

| ø   | B     | RPM max. | DU | tapered 40     | tapered 60     | tapered 80     |
|-----|-------|----------|----|----------------|----------------|----------------|
| 115 | 22.23 | 13300    | 10 | ● 5241-444 100 | ● 5241-446 100 | ● 5241-447 100 |
| 125 | 22.23 | 12250    | 10 | ● 5242-444 100 | ● 5242-446 100 | ● 5242-447 100 |

# Angle Grinders

Technical and General Information

## Efficient Solutions for Surface Processing.



Osborn polishing flap discs deliver outstanding results for the processing of stainless steel, steel, aluminium and non-ferrous metals thanks to an innovative, highly effective grinding fleece arranged in a fan-shaped lamella structure.

- **Highly effective for welding technology and metal processing applications**  
Delivers optimal results, for example when preparing welding seams, reworking welding seams and removing weld spatter in accordance with EN ISO 5817. Removes oxide films and thermal discolouration after the welding of pipelines, containers and apparatuses or after the plasma cutting of stainless steel sheets in accordance with DIN 50930, DIN 25410 and DVGW W541.
- **Highly effective for painting technology applications**  
Ideal for derusting, paint stripping and preparing surfaces for painting.
- **Extremely versatile**  
For cleaning and polishing unalloyed steel, high alloy steel, aluminium and non-ferrous metals. Suitable for edge and surface grinding.



Surfaces descaled prior to welding result in clean welding seams (see image at left)



Quick, professional derusting and descaling



Sanding fine welding seams and removing thermal discolouration



Appearance can vary from picture depending on variant.

EUGMFD013 | SUPERIOR ★★★★★

### Polimaxx 1 - coarse

**Fleece flap disc with coarse fleece texture (slight machining effect).**

- For descaling and derusting workpieces, preparing welding seams, smoothing welding seam flaking, sanding very fine welding seams, removing weld spatters.
- Polimaxx 1 flap discs are also available in sets with Polimaxx 2 and 3 discs.

**Application:** Universally applicable for stainless steel, steel, aluminium and non-ferrous metals.

| ø   | B     | RPM max. | DU | flat           |
|-----|-------|----------|----|----------------|
| 115 | 22.23 | 13300    | 10 | ● 5541-204 100 |
| 125 | 22.23 | 12250    | 10 | ● 5542-204 100 |



Appearance can vary from picture depending on variant.

EUGMFD014 | SUPERIOR ★★★★★

### Polimaxx 2 - medium

**Fleece flap disc with medium fleece texture (no machining effect).**

- For descaling and derusting workpieces, removing paints and varnishes, preparing surfaces for painting, matting of V2A welding seams or surfaces. Removing oxide films and thermal discolouration.
- Polimaxx 2 flap discs are also available in sets with Polimaxx 1 and 3 discs.

**Application:** Universally applicable for stainless steel, steel, aluminium and non-ferrous metals.

| ø   | B     | RPM max. | DU | flat           |
|-----|-------|----------|----|----------------|
| 115 | 22.23 | 13300    | 10 | ● 5541-206 100 |
| 125 | 22.23 | 12250    | 10 | ● 5542-206 100 |



## Angle Grinders

### Flap Discs for Polishing



Appearance can vary from picture depending on variant.



EUGMFD015 | SUPERIOR ★★☆☆☆

### Polimaxx 3 - fine

**Fleece flap disc with fine fleece texture (no machining effect).**

- For preparing and re-polishing welding seams, sanding fine welding seams, matting of surfaces, removing oxide films, thermal discolouration or thin layers of varnish on metals, polishing stainless steel.
- Polimaxx 4 for mirror finishes available.
- Polimaxx 3 flap discs are also available in sets with Polimaxx 1 and 2 discs.

**Application:** Universally applicable for stainless steel, steel, aluminium and non-ferrous metals.

| Ø   | B     | RPM max. | DU | flat           |
|-----|-------|----------|----|----------------|
| 115 | 22.23 | 13300    | 10 | ● 5541-207 100 |
| 125 | 22.23 | 12250    | 10 | ● 5542-207 100 |



Appearance can vary from picture depending on variant.



EUPOBU001 | SUPERIOR ★★☆☆☆

### Polimaxx 4 - gloss

**The gloss polishing flap disc for angle grinders is equipped with lamellas made of a special high-quality felt.**

- Please use with polishing compounds
- Gives a mirror finish

**Application:** Universally applicable for stainless steel, steel, aluminium and non-ferrous metals.

| Ø   | B     | RPM max. | DU | tapered        |
|-----|-------|----------|----|----------------|
| 115 | 22.23 | 13300    | 10 | ● 5541-220 100 |
| 125 | 22.23 | 12250    | 10 | ● 5542-220 100 |





Appearance can vary from picture depending on variant.

EUACAD008

Reducing Ring "HP-Adapter"

Reducing Rings provide a reliable solution for precisely adapting standard bore sizes to smaller diameters.

| adapt. from | adapt. to | DU | Item Number    |
|-------------|-----------|----|----------------|
| 16.00       | 9.50      | 1  | ● 0003-000 222 |
| 16.00       | 12.70     | 1  | ● 0003-000 223 |
| 22.20       | 9.50      | 1  | ● 0003-000 242 |
| 22.20       | 12.70     | 1  | ● 0003-000 243 |
| 22.20       | 16.00     | 1  | ● 0003-000 244 |







|                     |                     |                     |                     |                     |
|---------------------|---------------------|---------------------|---------------------|---------------------|
| <b>0</b>            |                     | 0002621151 ..... 6  | 0402631331 ..... 6  | 2008613062 ..... 16 |
| 0002512061 ..... 22 | 0002621351 ..... 6  | 0402631351 ..... 6  | 2008613063 ..... 16 |                     |
| 0002512062 ..... 22 | 0002622131 ..... 20 | 0802608133 ..... 12 | 2008613064 ..... 16 |                     |
| 0002512161 ..... 22 | 0002622151 ..... 20 | 0802608134 ..... 12 | 2008613065 ..... 16 |                     |
| 0002512162 ..... 22 | 0002622331 ..... 20 | 0802608135 ..... 12 | 2008613161 ..... 16 |                     |
| 0002512342 ..... 22 | 0002622351 ..... 20 | 0802608153 ..... 12 | 2008613162 ..... 16 |                     |
| 0002512361 ..... 22 | 0002623131 ..... 20 | 0802608154 ..... 12 | 2008613163 ..... 16 |                     |
| 0002512362 ..... 22 | 0002626061 ..... 8  | 0802608155 ..... 12 | 2008613164 ..... 16 |                     |
| 0002514161 ..... 22 | 0002626251 ..... 8  | 0802608183 ..... 12 | 2008613165 ..... 16 |                     |
| 0002514361 ..... 22 | 0002626650 ..... 8  | 0802608184 ..... 12 | 2008622151 ..... 21 |                     |
| 0002608131 ..... 11 | 0002626651 ..... 8  | 0802608185 ..... 12 | 2008631151 ..... 7  |                     |
| 0002608133 ..... 12 | 0002631131 ..... 6  | 0802613142 ..... 14 | 2118631151 ..... 7  |                     |
| 0002608134 ..... 12 | 0002631151 ..... 6  | 0802613144 ..... 15 | 2202631151 ..... 6  |                     |
| 0002608135 ..... 12 | 0002631331 ..... 6  | 0802613162 ..... 14 | 2202631331 ..... 6  |                     |
| 0002608151 ..... 11 | 0002631351 ..... 6  | 0802613164 ..... 15 | 2202631351 ..... 6  |                     |
| 0002608153 ..... 12 | 0002632131 ..... 20 | 0802613165 ..... 15 | 2312607914 ..... 18 |                     |
| 0002608154 ..... 12 | 0002632151 ..... 20 | 0802613166 ..... 15 | 2352512161 ..... 22 |                     |
| 0002608155 ..... 12 | 0002632331 ..... 20 | 0802613194 ..... 15 | 2352512342 ..... 22 |                     |
| 0002608183 ..... 12 | 0002632351 ..... 20 | 0802613195 ..... 15 | 2352512362 ..... 22 |                     |
| 0002608184 ..... 12 | 0002641131 ..... 6  | 0802613196 ..... 15 | 2352608131 ..... 11 |                     |
| 0002608185 ..... 12 | 0002641151 ..... 6  | 0802613362 ..... 14 | 2352608151 ..... 11 |                     |
| 0002608331 ..... 11 | 0002641181 ..... 6  | 0802613363 ..... 15 | 2352608331 ..... 11 |                     |
| 0002608333 ..... 12 | 0002641351 ..... 6  | 0802613364 ..... 15 | 2352622151 ..... 20 |                     |
| 0002608334 ..... 12 | 0002653131 ..... 6  | 0802632131 ..... 20 | 2352622351 ..... 20 |                     |
| 0002608351 ..... 11 | 0002653151 ..... 6  | 0802632151 ..... 20 | 2812522051 ..... 9  |                     |
| 0002608353 ..... 12 | 0002653181 ..... 6  | <b>1</b>            | 2902632151 ..... 20 |                     |
| 0002608354 ..... 12 | 0002653351 ..... 6  | 1202631131 ..... 7  | 2906026501 ..... 8  |                     |
| 0002611131 ..... 6  | 0002921874 ..... 9  | 1202631151 ..... 7  | <b>3</b>            |                     |
| 0002611151 ..... 6  | 0002921875 ..... 9  | 1202653131 ..... 7  | 3602632131 ..... 20 |                     |
| 0002613141 ..... 14 | 0003000222 ..... 37 | 1202653151 ..... 7  | 3602632331 ..... 20 |                     |
| 0002613142 ..... 14 | 0003000223 ..... 37 | 1212631131 ..... 7  | 3602632351 ..... 20 |                     |
| 0002613143 ..... 15 | 0003000242 ..... 37 | 1212631151 ..... 7  | 3892608131 ..... 11 |                     |
| 0002613144 ..... 15 | 0003000243 ..... 37 | 1402631131 ..... 6  | 3902512161 ..... 23 |                     |
| 0002613145 ..... 15 | 0003000244 ..... 37 | 1402631151 ..... 6  | 3902613161 ..... 17 |                     |
| 0002613146 ..... 15 | 0102512161 ..... 22 | 1402631331 ..... 6  | 3902613163 ..... 17 |                     |
| 0002613161 ..... 14 | 0102512162 ..... 22 | 1402631351 ..... 6  | 3902613164 ..... 17 |                     |
| 0002613162 ..... 14 | 0102512342 ..... 22 | 1602608131 ..... 11 | 3912613163 ..... 17 |                     |
| 0002613163 ..... 15 | 0102512362 ..... 22 | 1602608151 ..... 11 | <b>4</b>            |                     |
| 0002613164 ..... 15 | 0102608131 ..... 11 | 1602608331 ..... 11 | 4102921051 ..... 9  |                     |
| 0002613165 ..... 15 | 0102608151 ..... 11 | 1602613162 ..... 14 | 4306026904 ..... 6  |                     |
| 0002613166 ..... 15 | 0102608331 ..... 11 | 1602613361 ..... 14 | 4602626131 ..... 6  |                     |
| 0002613193 ..... 15 | 0102608351 ..... 11 | 1802607914 ..... 18 | 4612626331 ..... 6  |                     |
| 0002613194 ..... 15 | 0102613142 ..... 14 | <b>2</b>            | 4802622131 ..... 20 |                     |
| 0002613195 ..... 15 | 0102613161 ..... 14 | 2008512061 ..... 23 | 4802622331 ..... 20 |                     |
| 0002613196 ..... 15 | 0102613162 ..... 14 | 2008512161 ..... 23 | 4902613561 ..... 14 |                     |
| 0002613361 ..... 14 | 0102622131 ..... 20 | 2008608131 ..... 13 | 4902613562 ..... 14 |                     |
| 0002613362 ..... 14 | 0102622151 ..... 20 | 2008608151 ..... 13 | 4902613563 ..... 15 |                     |
| 0002613363 ..... 15 | 0102622331 ..... 20 | 2008608152 ..... 13 | 4912613561 ..... 14 |                     |
| 0002613364 ..... 15 | 0102622351 ..... 20 | 2008608153 ..... 13 | <b>5</b>            |                     |
| 0002613365 ..... 15 | 0402631131 ..... 6  | 2008608154 ..... 13 | 5211104100 ..... 32 |                     |
| 0002621131 ..... 6  | 0402631151 ..... 6  | 2008613061 ..... 16 | 5211106100 ..... 32 |                     |



|            |    |            |    |            |    |            |    |
|------------|----|------------|----|------------|----|------------|----|
| 5211107100 | 32 | 5232184100 | 30 | 5242437100 | 33 | 7932613196 | 19 |
| 5211109100 | 32 | 5232186100 | 30 | 5242444100 | 33 | 7942613196 | 19 |
| 5211304100 | 32 | 5232187100 | 30 | 5242446100 | 33 | <b>8</b>   |    |
| 5211306100 | 32 | 5232204100 | 29 | 5242447100 | 33 | 8812607914 | 18 |
| 5211307100 | 32 | 5232206100 | 29 | 5401401913 | 10 | <b>9</b>   |    |
| 5212104100 | 32 | 5232207100 | 29 | 5402921873 | 8  | 9301614916 | 18 |
| 5212106100 | 32 | 5232384100 | 30 | 5411401913 | 10 | 9311614916 | 18 |
| 5212107100 | 32 | 5232386100 | 30 | 5421401913 | 10 | 9321614916 | 18 |
| 5212109100 | 32 | 5232387100 | 30 | 5541204100 | 35 | 9331614916 | 18 |
| 5212304100 | 32 | 5241104100 | 31 | 5541206100 | 35 | 9502626251 | 6  |
| 5212306100 | 32 | 5241106100 | 31 | 5541207100 | 36 | 9502626301 | 6  |
| 5212307100 | 32 | 5241107100 | 31 | 5541220100 | 36 | 9502626311 | 6  |
| 5231004100 | 29 | 5241304100 | 31 | 5542204100 | 35 | 9502626501 | 6  |
| 5231006100 | 29 | 5241306100 | 31 | 5542206100 | 35 | 9502626651 | 6  |
| 5231007100 | 29 | 5241307100 | 31 | 5542207100 | 36 | 9502664151 | 6  |
| 5231009100 | 29 | 5241434100 | 33 | 5542220100 | 36 | 9706026904 | 8  |
| 5231184100 | 30 | 5241436100 | 33 | 5652613142 | 14 | 9802921873 | 8  |
| 5231186100 | 30 | 5241437100 | 33 | <b>6</b>   |    | 9802921875 | 8  |
| 5231187100 | 30 | 5241444100 | 33 | 6152631131 | 6  | 9906026011 | 8  |
| 5231204100 | 29 | 5241446100 | 33 | 6700001100 | 28 | 9906026051 | 8  |
| 5231206100 | 29 | 5241447100 | 33 | 6700002100 | 28 | 9906026116 | 8  |
| 5231207100 | 29 | 5242104100 | 31 | 6700003100 | 28 | 9906026117 | 8  |
| 5231384100 | 30 | 5242106100 | 31 | 6912613561 | 25 | 9906026247 | 8  |
| 5231386100 | 30 | 5242107100 | 31 | 6912613891 | 26 | 9906026500 | 8  |
| 5231387100 | 30 | 5242304100 | 31 | 6912622891 | 27 | 9906026501 | 8  |
| 5232004100 | 29 | 5242306100 | 31 | <b>7</b>   |    | 9906033125 | 13 |
| 5232006100 | 29 | 5242307100 | 31 | 7702921875 | 9  | 9906033126 | 13 |
| 5232007100 | 29 | 5242434100 | 33 | 7902613196 | 19 | 9908608132 | 12 |
| 5232009100 | 29 | 5242436100 | 33 | 7922613196 | 19 | 9908608152 | 12 |







[osborn.com](https://www.osborn.com)